



OVERLOAD



Severity & Frequency of Disasters Increasing

Slashed Budgets

Vulnerable Populations

What's the best use of NHMA Skills, Will, and Time?



Policy?

Advocacy?

Research?

Education?

Information Source?

Identifying Best Practices?

Part of our DNA ...

- "Follow the Breadcrumbs" (Use Forensic Decision-Making)
- "Push the **RIGHT** Buttons" (Motivate with Reward & Punishment)
- "Face the Boogiemani" (Confront the Risks)
- "Be a Sparkplug" (Members as Advocates)
- "Cheap, Quick, & Works" Good Mantra for Success



The Power of One Person

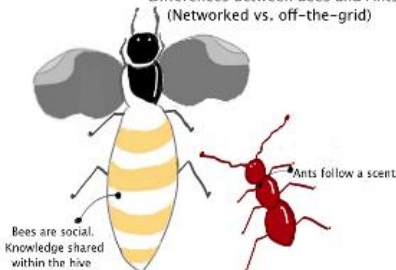


Stories of Success



Multiple Trusted Sources
One Message

Differences Between Bees and Ants (Networked vs. off-the-grid)



Bees are social. Knowledge shared within the hive (network).

Ants follow a scent.



Children take "Teachable Moments" home to their parents.

