



COOPERATING TECHNICAL PARTNERS (CTP) COLLABORATION MONTHLY

INSIDE THIS EDITION

Program Updates

Register Now for the Spring Technical Webinar on May 24th!

5th Annual CTP Recognition Program: Final Live Vote on April 12th CoP

IT and Data Management Branch: Important Project Updates

Guidance, Standards, and Policy

Consolidated: Key Decision Point Forms and Letter of Final Determination Questionnaire

Best Practices

Region 8 Virtual Conference Brings CTPs Together to Celebrate Progress

April 8, 2021

Vol 7, Edition 4

Inside this Edition

- [Program Updates](#)
- [Guidance, Standards, and Policy](#)
- [Best Practices](#)
- [Recommended Tools and Resources](#)
- [Training Opportunities](#)
- [General Announcements](#)

Program Updates

Register Now for the Spring Technical Webinar on May 24th!

[Registration is now open](#) for the Spring 2021 CTP Technical Webinar, to be held on May 24, 2021! This webinar will be a 3-hour virtual event covering an overview of timely technical topics and giving CTPs a chance for live Q&A with the presenters.

Event and sign-up information:

- **Date and Time:** May 24, 2021, from 1-4 p.m. EST
- **Location:** Deloitte Zoom (link TBD)
- **Register:** All those interested in attending should [register through Eventbrite](#) by Friday, May 21, 2021. Login information will be provided to

Incorporating
Experiential
Learning and
Collaboration into
Virtual
Environments

Recommended Tools and Resources

New Resources
Support Resilience
and Mitigation in
Rural and
Agricultural
Communities

New Online
Resources
Available to Inspire
Communities to
Reduce Current
and Future Risks

Training Opportunities

Making Mitigation
Work Webinar
Series

FEMA's
Emergency
Management
Institute (EMI):
COVID-19 Update

Online Training:
The Cooperating
Technical Partners
(CTP) 101
Overview Course

Training Hotlinks

General Announcements

Have a CTP
Best Practice to
Share?

Check out the CTP
Discussion Board

CTP Program

those who register.

Agenda Topics:

- Data Validation Tool (DVT): Review the recent update to the Tool and its impacts.
- Automated Map Production (AMP) Tool: Conduct a live demo and training of the new Tool, including reviewing best practices and tips/tricks for using it.
- Managing Large Datasets and Data Uploads: Review best practices and issue resolution surrounding the management of sizable datasets, including ensuring data stored on external hard drives is uploaded to the FEMA Engineering Library.
- Applied Approaches: Provide an overview of the “do’s and don’ts” of 2D floodway modeling.

We hope you will join us for this chance to connect!

This webinar replaces the Spring Special Topics Seminar that was scheduled to take place on April 19-22 at the Emergency Management Institute (EMI) in Emmitsburg, MD, which is postponed until August 23-26, 2021. **The new course details are as follows:**

- **Summer: E8241 Cooperating Technical Partners Seminar**
 - Dates: August 23-26, 2021
 - Aligned to the Risk MAP mapping lifecycle, this seminar will focus on the technical components of a study, such as data collection, modeling techniques, 1D versus 2D studies, FIRM production, flood risk products, Guidelines & Standards, and more.
 - Location: Emergency Management Institute (EMI), Emmitsburg, MD

If you already registered for the course with EMI or obtained a pre-approval letter to register, you should have received a separate email from Emily.Kirkpatrick@arcadis.com with guidance and instructions on next steps.

For more information, contact CTP National Program Coordinator Laura Algeo (laura.algeo@fema.dhs.gov) or CTPAdmin@RiskMapCDS.com.

5th Annual CTP Recognition Program: Final Live Vote on April 12th CoP

The nomination period for the **5th Annual (2021) CTP Recognition Program** is now closed. Like last year, we are spotlighting CTP best practices and successes that advance the [National Mitigation Investment Strategy \(NMIS\)](#), published by FEMA in August 2019. New this year is an optional/bonus sub-theme of virtual innovations to showcase how CTPs are achieving the NMIS activities in the virtual environment. Some of these innovations may in fact become part of the “new normal” even after the pandemic ends. FEMA is currently conducting an eligibility review of the nominations. The steps in the CTP Recognition Program process are:

Volunteer Opportunities

Send Us Your Article Ideas

USEFUL LINKS

Need help with ND Grants? Visit [FEMA.gov](https://www.fema.gov). For assistance, please reach out to your FEMA Region CTP Lead.

Best Practice Templates are located in the [Best Practices](#) section on the CTP Collaboration Center.



Register for Access to the CTP Collaboration Center

Click the link below to register for access to the CTP Collaboration Center.

[Click here](#)



Click below to access the CTP Collaboration Center

[Click here](#)



Need Assistance?

If you have questions about the CTP Collaboration Center, or are having trouble accessing the site, click below.

[Click here](#)

1. **FEMA Review and Selection:** Once all nominations were received, FEMA reviewed each nominee and ensured their information was correct. Nominees were notified and had an opportunity to review and update their information as needed.
2. In late March, FEMA distributed the final nominations to the CTP CoP for review. Using an online survey, the CTP CoP performed a pre-vote via SurveyMonkey to select the top 3-5 nominees for the live vote.
3. **Top-selected CTP nominees will be part of the final vote on April 12, 2021 during the Community of Practice (CoP) General Meeting.** If you did not receive the invite for this meeting, please reach to CTPAdmin@RiskMapCDS.com.
4. **Winner Announcement at ASFPM (May 2021):** Winners will be announced at the ASFPM annual conference to be held virtually May 10-14, 2021.

IT and Data Management Branch: Important Project Updates

The Risk Management Directorate's (RMD) IT and Data Management (ITDM) branch is prioritizing the completion of several projects that support RMD's current and future objectives. The following projects are currently in development by ITDM:

- **Project Planning and Purchasing Portal (P4):** P4 provides FEMA Regions a platform to plan investments on a multi-year basis, sequence projects to be funded annually, and develop the required Statement of Priorities for the work order process. P4 also supports FEMA HQ with budgeting, governance, audit, and reconciliation needs. A variety of improvements are being made to P4, including enhancements to the dashboard, search, and workflow capabilities, which will decrease the time it takes to create projects and purchases in the application.
- **Mitigation Planning Portal (MPP):** The MPP is an online platform for tracking and reporting hazard mitigation plans and related data elements across all Regions. The new application includes a user friendly, front-end design, a new tabular and geospatial jurisdiction layer, and a stand-alone authentication and authorization service. These features maintain tracking and reporting accuracy to support effective mitigation planning.
- **Repository Redundancy Reduction (R3):** The R3 project will minimize duplication across the Mapping Information Platform (MIP) and Map Service Center (MSC) applications to reduce data redundancy, increase efficiency, and improve traceability by reducing the number of manual tasks performed on a regular basis to post products from the MIP to the MSC.
- **FIRMette Web Tool Update:** The FIRMette Web tool allows users to create, export and easily print a full-scale section of a FIRM panel. This update of the tool will feature improved technology and a more user-friendly interface.

In addition to these projects, ITDM continues to focus on vulnerability remediation and the advancement of IT modernization planning. Progress in these areas will allow ITDM to improve the quality, confidence, and speed at which they deliver working software and provide value to RMD and other customers.

Guidance, Standards, and Policy

Consolidated: Key Decision Point Forms and Letter of Final Determination Questionnaire

The Letter of Final Determination (LFD) Questionnaire has been consolidated into the Key Decision Point (KDP) 5 forms. This effort reduces the number of required forms from two to one, and eases the administrative burden of documenting an advancement in a Flood Risk Project's lifecycle. This update is now live [on the RMD SharePoint site](#) in both the KDP tool and the revised KDP 5 forms.

This consolidation does not alter the need for Post-Preliminary Processing (PPP) Leads to review and approve KDP 5 forms before they are submitted to the Region. The LFD Questionnaire needs to be reviewed and approved by the PPP Lead prior to submittal; this part of the process is not changing. If you have questions about this consolidation, please reach out to Bryan Anderson (bryanb.anderson@fema.dhs.gov).

Best Practices

Region 8 Virtual Conference Brings CTPs Together to Celebrate Progress

FEMA Region 8 hosted their annual CTP Conference this past February. The 2021 virtual format included two half-day sessions with topics and discussions covering 2D Floodways, Levees, Annual Report Outs, Grant Procedures, Budget and Planning, CERC Opportunities, and Feedback Survey Results.

The 2021 CTP Conference included nearly thirty people from across the six-state Region. CTPs represented were Mile High Flood District (MHFD), Colorado Water Conservation Board (CWCB), Montana Department of Natural Resources and Conservation (MTDNRC), North Dakota State Water Commission (NDSWC), and Utah Department of Emergency Management (UTDEM). Other participants and presenters included FEMA Region 8 Risk MAP project managers and several Risk MAP contractors.

Despite this year's challenges, the CTPs in the region made significant progress. MTDNRC recently completed a massive LiDAR project, collecting data for more than 78,000 square miles which will be used to start new mapping projects. NDSWC began to publish maps and data on the [North Dakota Risk Assessment MapService](#), a publicly available risk assessment resource. MHFD is developing a new online platform named "Confluence" that will allow the public to more easily engage with data and mapping projects. CWCB showcased the [Colorado Hazard Mapping and Risk Map Portal](#), a tool that allows homeowners to gauge their risk of flood hazards. Finally, UTDEM is remapping 386 miles around the Great Salt Lake area to provide updated information to 26 communities.

If you have any questions about the Region 8 annual CTP Conference, please

reach out to Chris Gaynes at christine.gaynes@fema.dhs.gov.

Incorporating Experiential Learning and Collaboration into Virtual Environments

In January 2021, FEMA Region 9 held a Multi-Hazard Inventory/Data Collection Workshop that sought to improve communities' access to data and broaden the reach of their efforts to use it. Partnering with the earthquake program managers from FEMA Regions 8 and 10, the workshop brought together more than 80 local, state, federal, tribal, academic, and private sector partners to share and discuss ways to help communities understand the importance of collecting and understanding their data, capture findings in their hazard mitigation plans, and make data-informed decisions.

Attendees connected virtually across three afternoons and looked closely at how collecting and inventorying data can help departments, jurisdictions and regions make decisions and serve as a foundation for mitigation planning. The group also discussed how local agencies and communities can partner outside their normal spheres of influence to share the information, so it can be used across a broader scale.

To plan and organize the workshop, FEMA Region 9 drew insights from a planning team of more than 30 local, state, and federal partners. This multi-disciplinary group helped develop the agenda, tailor presentations, and co-create worksheets and tools that aligned with the common themes for each day. The planning team's invaluable expertise and fresh points of view shaped discussions and accommodated the participants' different knowledge levels and areas of interest. Attendees praised the workshop's educational and results-oriented format.

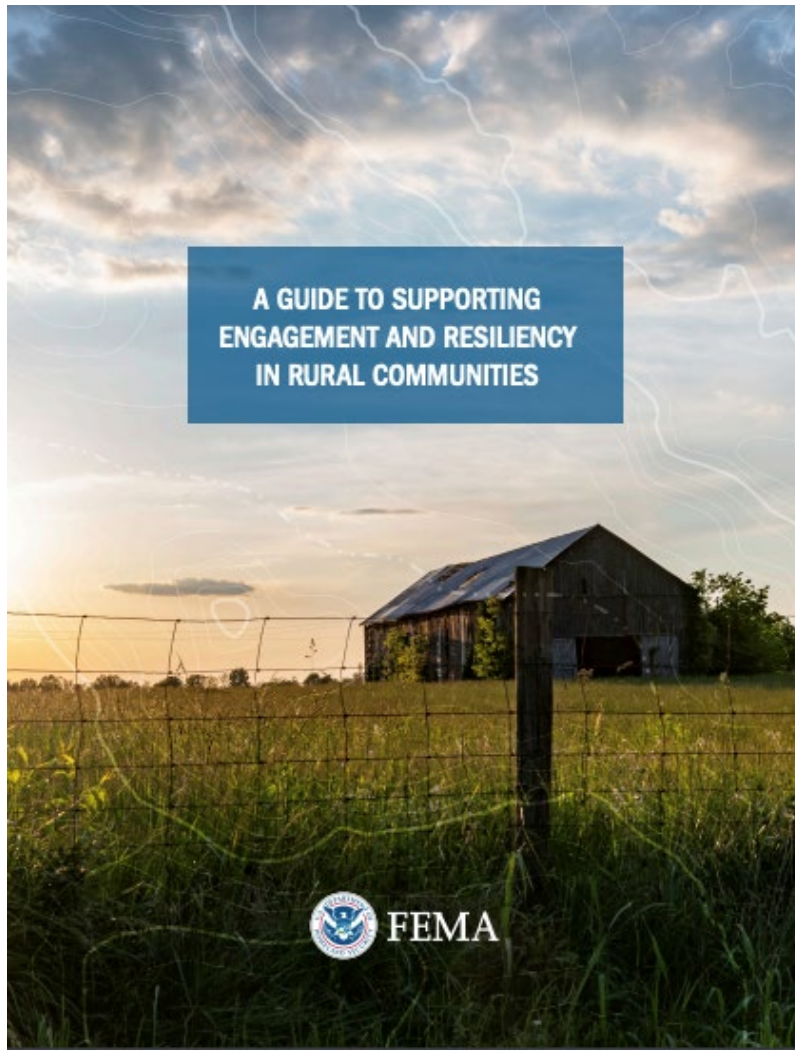
Please contact Anne Rosinski, FEMA Region 9 Earthquake Program Manager, at anne.rosinski@fema.dhs.gov for more information.

Recommended Tools and Resources

New Resources Support Resilience and Mitigation in Rural and Agricultural Communities

FEMA's Risk Management Directorate developed [A Guide to Supporting Engagement and Resiliency in Rural Communities](#) and [Connecting Mitigation and Agriculture](#) as part of its "Guides to Expanding Mitigation" series. These tools help FEMA staff, partners, and providers enhance engagement and planning activities in rural communities to improve mitigation and risk reduction efforts.

When a disaster such as a major flood occurs and crops are at risk, it is too late to start the mitigation actions that would help local farmers and other community members. Teams focused on mitigation planning in rural communities can use these two publications to guide their efforts in addressing natural hazard risk before a disaster occurs. The guides include ideas for collaboration and actionable steps to better understand and leverage the knowledge and experience of local decision makers, in particular stakeholders from the agricultural sector. The Rural Engagement Guide and the Agriculture Guide prepare users for effective collaboration at each Risk MAP community engagement touchpoint, such as the consultation coordination officer meeting and public open house.



**A GUIDE TO SUPPORTING
ENGAGEMENT AND RESILIENCY
IN RURAL COMMUNITIES**



A Guide to Supporting Engagement and Resiliency in Rural Communities

With these tools partners can build trust and gain understanding of the community's needs. The guides help identify opportunities to advance local resilience and mitigation efforts, creating plans and projects that reflect the whole community. When a community is engaged as a partner and shares responsibility in the Risk MAP process, that community is more likely to own their risks and endorse outcomes that advance resilience and mitigation.

To learn more about A Guide to Supporting Engagement and Resiliency in Rural Communities, Connecting Mitigation and Agriculture, and other risk reduction resources, visit the [Guides to Expanding Mitigation page on fema.gov](#).

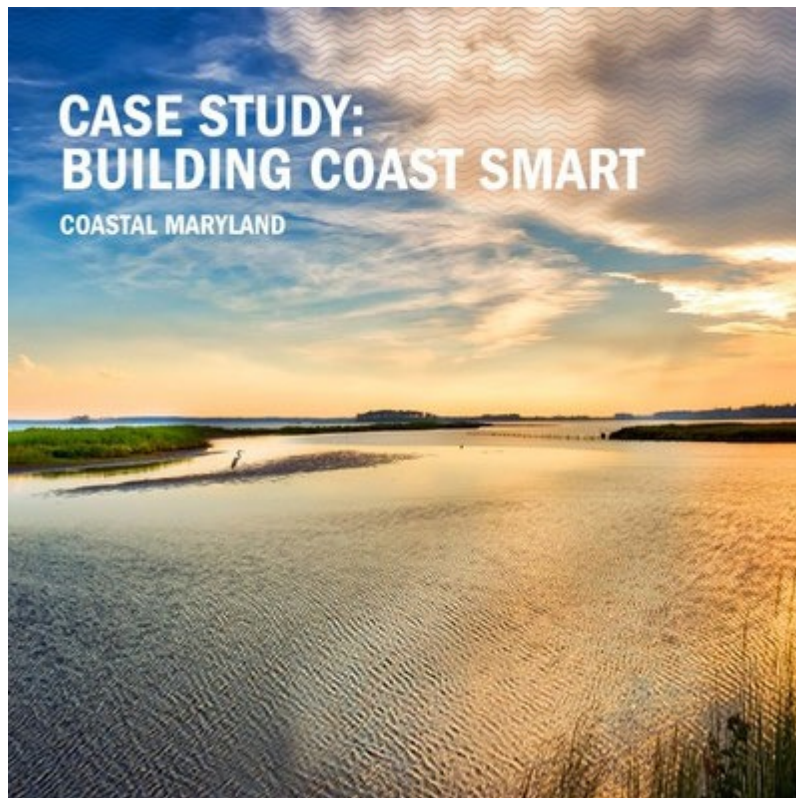
New Online Resources Available to Inspire Communities to Reduce Current and Future Risks

FEMA launched a new interactive story map to help coastal communities understand their unique risks and to use data from coastal studies to become more resilient. "[Thinking Beyond Flood Maps](#)" presents ideas to inspire coastal communities to use FEMA flood mapping data for more than just floodplain management ordinances or explaining flood insurance purchase requirements. Case studies from four coastal communities show how they have used the data to enhance resilience from floods.

The four case studies featured in the story map are:

- Pinellas County, Florida launched an outreach and education program for residents about flood hazards. Pinellas County also started a training program to help real estate agents answer flood-related questions from potential home buyers.
- Communities along coastal Maryland participated in the Coast Smart Construction Program and other initiatives to reduce the impacts of rising sea levels and flooding in coastal areas.
- Aberdeen, Washington implemented the Risk Visualization Viewer, an interactive map developed by the state and FEMA to help users identify potential tsunami flooding.
- New York City is using FEMA data to develop Future Flood Risk Maps to identify areas vulnerable to floods, which will support the city's resilient design and planning efforts.

All of FEMA's story maps on flood risk and mitigation can be found [here](#).



“Thinking Beyond Flood Maps” Highlights Maryland’s Work to Build Resilience Through Stronger Codes and Standards

In addition to the story map, FEMA recently launched these new resources:

- [Planning for Future Conditions](#): This brief guide for local officials and community planners explains why it is important to consider future risks in hazard mitigation plans and other risk reduction strategies. It offers tips for addressing changing risks and provides links to resources that can help communities learn more and take action.
- [Building Community Resilience with Nature-Based Solutions: A Guide for Local Communities](#): This resource helps local communities, states, territories, and tribes make the business case for nature-based solutions.

It also offers guidance for planning and implementation, including public and private funding for projects. The guide was developed in partnership with resilience experts from the National Oceanic and Atmospheric Administration (NOAA).

Training Opportunities

Making Mitigation Work Webinar Series

The Natural Hazards Center, in partnership with FEMA, is pleased to present [the Making Mitigation Work Webinar Series](#). These free one-hour webinars feature innovative speakers and highlight recent progress in mitigation policy, practice, and research.

Scheduled dates are listed below:

- Tuesday, April 13, 2021, 1:00 to 2:00 p.m. Eastern – [Implementing Mitigation Near and Far: U.S. States, New Zealand, and Applied Research](#)
- Tuesday, May 11, 2021, 1:00 to 2:00 p.m. Eastern - [Mapping Risk: The National Risk Index for Natural Hazards](#)
- Tuesday, June 8, 2021, 1:00 to 2:00 p.m. Eastern
- Tuesday, August 10, 2021, 1:00 to 2:00 p.m. Eastern

Specific topics for the June and August webinars will be announced closer to each date. Please reach out to **Katie Murphy** at hazctr@colorado.edu if you have any questions or would like more information.

FEMA's Emergency Management Institute (EMI): COVID-19 Update

COVID-19 Update

Emergency Management Institute training at the National Emergency Training Center (NETC) and at field locations is cancelled until further notice. This suspension supports CDC social distancing recommendations and allows EMI students to focus on their families and communities. If you were scheduled for a class at NETC, the Admissions Office will contact you to reschedule. EMI will work to reschedule courses for later in the year to the maximum extent possible.

Training Opportunities

Despite some delays and cancellations due to COVID-19, EMI is still offering many courses. For information on EMI classes and webinars, please visit the [EMI website](#).

Online Training: The Cooperating Technical Partners (CTP) 101 Overview Course

Announcing the launch of the IS-2101: CTP Overview Course

Gain a detailed overview of the program from funding basics to the future of the program, program evolution details and direction.

This course is valuable for all CTP levels and is **recommended** for all participants of the EMI 2019 Special Topics courses.

[Click here to access this course.](#)



The [CTP 101 eLearning course](#) is available on the Emergency Management Institute (EMI) training website. This course is designed for communities and Regional and State agencies that are participating in the CTP Programs. The course provides a foundational overview of the CTP Program and addresses specific areas such as funding, resources, eligible activities and Program evolution. The advantages to taking this eLearning course are:

New CTPs (1-3 years): Gain a detailed overview of the Program from funding basics to the future of the Program. New CTPs gain a basic understanding of Program elements, functions, terms, concepts and helpful tools.

Mid-Level CTPs (4-10 years): Review the Program basics, receive clarification of foundational concepts, explore available tools and resources and be introduced to evolution and Program direction.

Senior CTPs (>10 years): Review the Program basics and receive clarification of concepts, Program evolution details and direction.

Other Stakeholders: This course is also valuable to organizations who desire to become CTPs, FEMA Risk MAP Staff and providers. These audiences can build foundational program knowledge, an overview of programmatic processes and program history.

Students receive 0.2 CEUs.

The course is also available via mobile technology. You can take course via smart phone, tablet or computer. Compatible systems include iOS and Android. [Click here to take the course.](#)

Training Hotlinks

The CTP Program offers a number of training opportunities. Some of our top training resources are:

1. [The Self-Assessment Tool](#)
2. [In-Person Training at the Emergency Management Institute](#)
3. [The CTP 101 Course](#)
4. [Various CTP Program Webinars](#)
5. [The CTP Collaboration Center Discussion Board](#)

General Announcements

Have a CTP Best Practice to Share?

Over the past year, the CTP Program has been capturing best practices and developed a template to share those practices across the program. To expand

that information sharing and education, the Program is collecting new best practice examples.

To share a best practice created by your CTP organization, download and complete the "[Best Practices Template](#)" and send it to CTPAdmin@riskmapcdfs.com for review. If accepted, the best practice will be included on the CTP Collaboration Center and featured in the Collaboration Monthly.

For more information, a CTP Program Webinar Series titled **Show Your Work - Creating CTP Program Best Practices** was given at the CTP CoP General Committee Meeting. The [webinar](#) can be found on the CTP Collaboration Center. Click [here](#) to see past CTP Best Practices.

Have Questions? Need Answers? Check out the CTP Program Discussion Board!

CTPs and FEMA staff, particularly if they are new to the program, often have questions. A great way to find answers is to post a question to the [CTP Program Discussion Room](#) on the CTP Collaboration Center. There are several ways we can help get your questions answered:

1. **Mentoring Needs:** If you need mentoring in a topic, we can find someone to work with you.
2. **CTP Program Process Questions:** If you need help with the grants process or other CTP Program-related process questions, we can work with you to answer your questions directly.
3. **CTP-CTP Collaboration:** CTPs can post questions broadly throughout our CTP Program network.
4. **CTP-FEMA Collaboration:** CTPs can pose questions for FEMA and we'll reach out to the appropriate person to answer your query.
5. **Need Tools and Resources:** If you cannot find something you may post a question asking for a resource or where to find it. We'll get back to you personally to help you find it!

Use this Discussion Board to your advantage. Ask questions! Get answers!

CTP Program Volunteer Opportunities

There are several ways to get more involved in the CTP Program!

1. Talk to your Region about participating in the CoP Steering Committee. The CoP Steering Committee meetings quarterly to discuss the CTP Program's operational goals and objectives
2. Join the CTP Training and Mentoring Working Group
 - Volunteer to be a webinar subject matter expert
 - Sign up to be a Mentor
3. Join the CTP Recognition Program Ops Plan Working Group
4. Join the Performance Measures Ops Plan Working Group
5. Join the Communications Products and Outreach Ops Plan Working

Group

6. Join the LOMR Review Partners Program Ops Plan Working Group!

Contact CTPAdmin@riskmapcdfs.com if you are interested in participating in any of these opportunities.

CTP Collaboration Monthly and RMD News Flash: Send Us Your Article Ideas!

The CTP Program is always looking for CTPs to submit topics or articles for the CTP Collaboration Monthly and the Risk Management National News Flash. If you have a topic or article to submit, or if you or your colleagues are not on the email distribution list for the Collaboration Monthly or News Flash, please contact CTPAdmin@riskmapcdfs.com



RMD RISK MANAGEMENT DIRECTORATE **FEMA**
National News Flash

October 24, 2019
Volume 7, Edition 10

INSIDE THIS EDITION

- *New* State Hazard Mitigation Planning Training Available
- The Industry Management Branch (IMB) Announces New Agent Training
- Best Practices Help to Share Successful Approaches from Across the Country
- FEMA Earthquake Program Managers meet in Alexandria, VA for the Earthquake Workshop
- Plain Language Flood Resilience Messaging Guide Now Available
- Upcoming MIP Migration Coming in Early November

Coming Up in 2019

- CERC Webinar, October 31
- Regional Engineers Meeting, November 1
- MIP Office, November 1-10
- Region VII CTP Rendezvous, November 12-14
- RMD All Hands Meeting, November

Diversity Corner

[BACK TO TOP](#)



SHARE



[Update Your E-mail Address](#) | [Change Delivery Preference](#) | [Update State and Zip Code](#) | [Unsubscribe](#)
[Subscribe to receive alerts during disasters in your state.](#)

If you have questions or problems with the subscription service, please contact subscriberhelp.govdelivery.com.

This service is provided to you at no charge by [FEMA](#).

[Privacy Policy](#) | GovDelivery is providing this information on behalf of U.S. Department of Homeland Security, and may not use the information for any other purposes.